

RS elite

NATIONAL CHAMPIONSHIP

11-14 JULY 2019

PROVISIONAL PROGRAMME



VOLVO
DÚN LAOGHAIRE REGATTA
IN PARTNERSHIP WITH SPIRIT MOTOR GROUP





VOLVO DÚN LAOGHAIRE REGATTA

IN PARTNERSHIP WITH SPIRIT MOTOR GROUP



The Regatta that prides itself in delivering quality racing along with a wonderful festive atmosphere across the Dún Laoghaire Waterfront.



An event to remember

Whether in Lymington, Hayling, Cowes, Burnham or Belfast, our National Championship has always been run as a standalone event hosted by an RS Elite club. The host clubs, each in their own individual way, always make an extra special effort to make us, the competitors, feel extraordinarily welcome.

In 2019, for the first time, our National Championship will be held as part of a much bigger event – the Volvo Dún Laoghaire Regatta. The harbour's four waterfront clubs (Dun Laoghaire Motor YC, National YC, Royal St George YC and Royal Irish YC) come together every other year to run a fabulous event over four days, with some 500 boats across 37 classes on 9 separate race courses in Dublin Bay.

I have no doubt that the four Clubs will go out of their way to look after us and ensure that we enjoy one of our best Championships to date. To make the event extra special, we will have our own dedicated course area if we muster at least 30 confirmed entries before 31 March 2019. Less than 30 entries means we will share the race course with the Dragons and SB20s. We would, assuming at least 10 entries, have our own start line.

The Notice of Race is due to be published in the first week of November with a Super Early Bird Entry (where 10% of those entered are in with a chance of having their full entry fee refunded) and an Early Bird Entry which normally runs to 31 March – the full entry fee applies thereafter. Entry fees are expected to be similar to 2017 when the Early Bird fee was €160.00 (approx £140.00¹) with standard entry €225.00 (approx £200.00¹) including lift in and out, event berthing and race fees.

Dun Laoghaire is a town rich in history and culture with a host of different things to do – with Dublin city centre less than half an hour away, it is undoubtedly a spectacular venue. Book your accommodation soon as it will be filling up fast and be sure to get your entry in early so we can make the 2019 National Championship an extra special one to remember!

Paul Fisk
Chairman
RS Elite Class Association

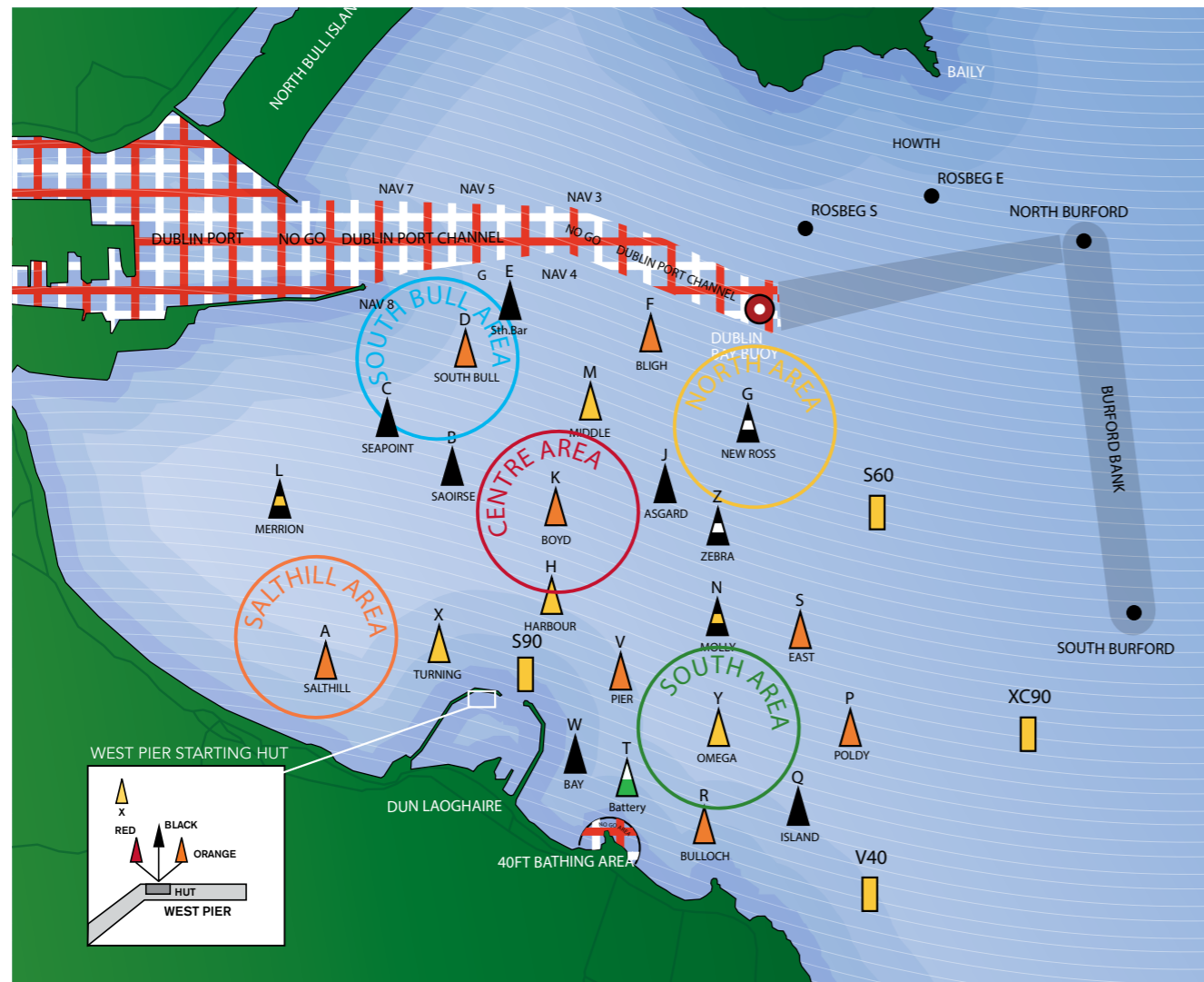
¹ Exchange rate as at 21 September 2018

Provisional event schedule

The race and social programme for 2019 is not yet finalised but with four waterfront yacht clubs competing for our attention, there will be a brilliant shoreside entertainment programme comprising breakfast, drinks promotions, numerous live bands, gala dinners, BBQs, seafood, tapas, fish & chips, pizzas – we are spoilt for choice with something for everyone. We aim to hold the Class Championship Dinner on Saturday evening at the Royal St George YC. See pages 8–9 for the 2017 Social Programme as an example of the offering.

DAY	TIME	EVENT	LOCATION
Tues 9 July	1500 – 2100	Registration	Race Office
Wed 10 July	1100 – 1900	Registration	Race Office
	TBC	Crane in	Royal St George YC
Thurs 11 July	0800 – 1100	Breakfast	Royal St George YC
	1400	Races 1 & 2	Dublin Bay
	1830	Drinks Promotion	Royal Irish YC
	2030	Daily Prizegiving	Dun Laoghaire Motor YC
Fri 12 July	0800 – 1100	Breakfast	Royal St George YC
	1100	Races 3, 4 & 5	Dublin Bay
	1800	Drinks Promotion	Royal St George YC
	1900	Daily Prizegiving	National YC
Sat 13 July	0800 – 1100	Breakfast	Royal St George YC
	1100	Races 6, 7 & 8	Dublin Bay
	1800	Drinks Promotion	Royal St George YC
	1900	Daily Prizegiving	Royal St George YC
	2000	Class Championship Dinner	Royal St George YC
Sun 14 July	0800 – 1100	Breakfast	Royal St George YC
	1100	Races 9 & 10	Dublin Bay
	After racing	Crane out	Royal St George YC
	1600	Closing Ceremony & Prizegiving	Royal Irish YC

Race area

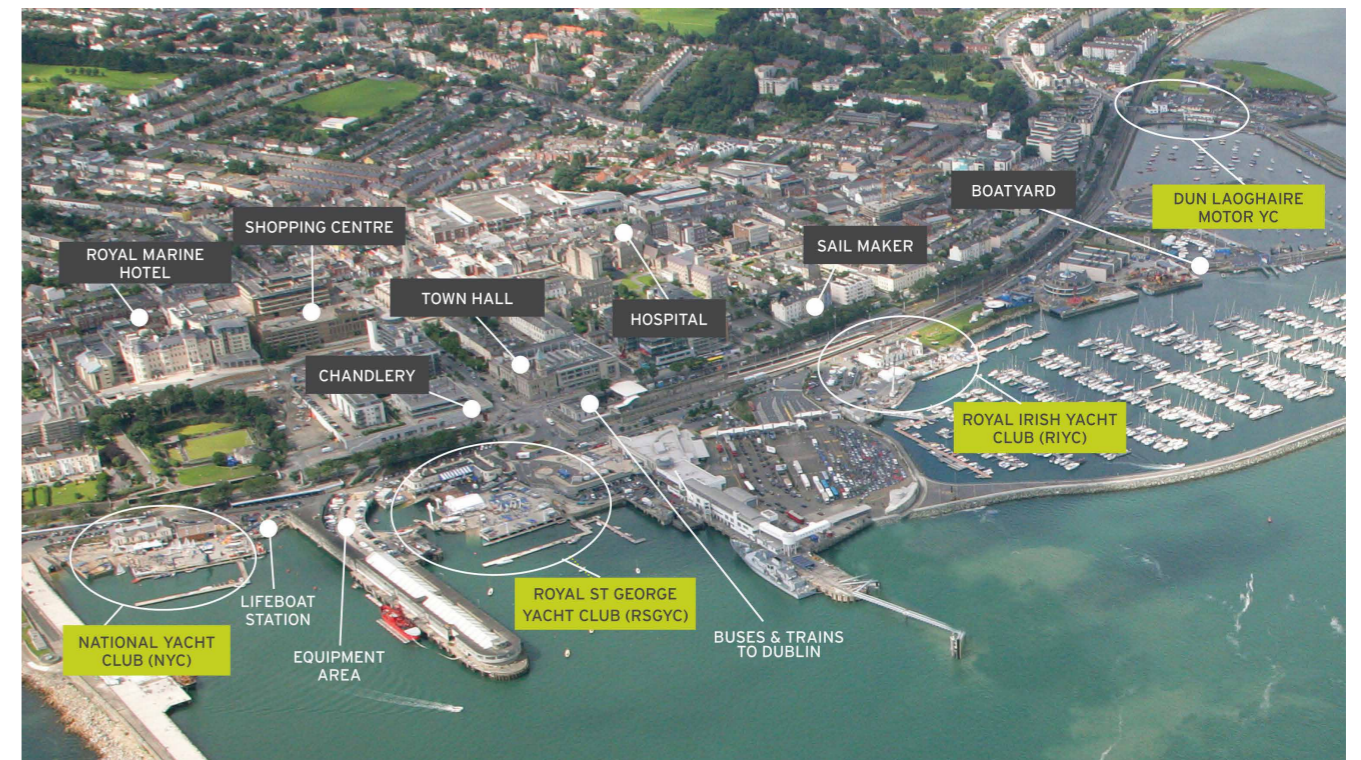
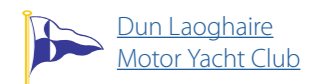


The race area will be in Dublin Bay. If we must have at least 30 confirmed entries before 31 March 2019, we will have our own dedicated course area which will most likely be positioned to the west of the Centre Area above. Less than 30 entries means we will share the race course with the Dragons and SB20s and the race course will alternate between the Centre and North Areas.

Harbour area and host clubs

All competitors to VDLR become temporary members of all four waterfront yacht clubs for the event – the Dun Laoghaire Motor Yacht club, The Royal Irish Yacht Club, The Royal St George Yacht Club and the National Yacht Club.

Passes are issued to all sailors and their guests to allow them free movement between all clubs for the duration of the event. The RS Elite class will most likely be 'looked after' by the Royal St George Yacht Club for craning and berthed together on pontoons.



Car parking

The harbour area is a public parking area with ample parking. It operates on a Pay & Display system and parking may be pre-paid. Fees are €2 per hour, or daily rates range from €4 to €8 depending on the harbour zone. Alternatively, if staying in the Royal Marine Hotel they have ample parking for guests.

Trailer storage

Safe trailer storage is provided for all boats and included in the entry fee.

Social programme 2017

The 2019 programme is not yet finalised but is expected to be along similar lines – the craic will be mighty!



Dun Laoghaire Motor Yacht Club



<p>Thursday 6th</p> <p>20.30 Daily Prizegiving, Bar open & BBQ</p> <p>Friday 7th</p> <p>16.00 Bar open, Gin drinks promotion</p>	<p>Saturday 8th</p> <p>16.00 Bar open & BBQ</p> <p>Sunday 9th</p> <p>12.00 Bar open & BBQ</p>
--	---



DMYC: Dun Laoghaire Motor Yacht Club
 NYC: National Yacht Club
 RIYC: Royal Irish Yacht Club
 RSGYC: Royal St. George Yacht Club



National Yacht Club



<p>Thursday 6th</p> <p>Entertainment 19.00 The Regatta Classics Drinks Reception 19.00-21.00 Acoustic Greats' Paul McGuinness</p> <p>Catering 12.30 Welcome Lunch for Members & Visiting Sailors -Main Course Special 19.00 BBQ: Burger Suckling Pig, Seafood Stir-Fry, Kebabs...</p> <p>Friday 7th</p> <p>Entertainment 16.00-18.00 DJ Mark Halligan 18.00-20.00 Band - BOP TILL U DROP 20.00-23.00 DJ Mark Halligan</p> <p>Catering 08.30 'The Bretzel Bakery Breakfast Roll' 12.30 Bar Lunches 16.00-Late BBQ: Burger Suckling Pig, Seafood Stir-Fry, Kebabs... 19.00 The Classics Regatta Dinner (booking essential)</p>	<p>Saturday 8th</p> <p>Entertainment 14.00 Kids Entertainment 17.00 Gin and Rum Promotion 18.30 Band - SLAM 19.00 Daily Prizegiving 20.00-22.00 DJ Mark Halligan 22.30-Late Mark Halligan Regatta Dancing</p> <p>Catering 08.30 'The Bretzel Bakery Breakfast Roll' 12.30 'Ino Wine & Bellinter House' Ladies Lunch 15.00 DJ Mark Halligan 16.00 BBQ: Burger Suckling Pig, Seafood Stir-Fry, Kebabs... 20.00 Gala Dinner - (booking essential)</p> <p>Sunday 9th</p> <p>Catering 08.30 'The Bretzel Bakery Breakfast Roll'</p>
---	---



Royal Irish Yacht Club



<p>Thursday 6th</p> <p>Entertainment 18.30 Kracken Drinks Promotion 18.30-20.30 Band - THE ROB STRONG BAND 21.00-23.30 Band - WHO'S EDDIE</p> <p>Catering 18.00 BBQ: Pig on Spit,Wok,Pizzas</p> <p>Friday 7th</p> <p>Entertainment 18.00 Cruiser 3 Drinks Reception 18.30 Gin & Tonic Reception 19.00 Daily Prizegiving 19.00 Band - DOG RUFF 21.30-23.30 Band - FULL CIRCLE</p> <p>Catering 08.00 Breakfast Buffet in the Drawing Room 17.00 BBQ: Pig on Spit,Wok, Pizzas</p>	<p>Saturday 8th</p> <p>Entertainment 08.35 3rd Lions Test Match Vs New Zealand 16.00-18.00 Band - BOP TILL U DROP 18.30-21.00 Band - SKIN THE GOAT 21.00-00.00 DJ</p> <p>Catering 08.00 Breakfast Buffet in the Drawing Room 12.30 'Ino Wine & Bellinter House' Ladies Lunch 16.00 BBQ: Pig on Spit, Wok, Pizzas 20.00 Gala Dinner (booking essential)</p> <p>Sunday 9th</p> <p>Entertainment 13.00 Kids Entertainment 13.00-15.00 Band - ACOUSTIC BUZZ</p> <p>Catering 08.00 Breakfast Buffet in the Drawing Room 13.00 BBQ: Pizza, Wok</p>
---	--



Royal St. George Yacht Club



<p>Thursday 6th</p> <p>Entertainment 18.00-23.00 DJ</p> <p>Catering 12.30-14.30 Bar Lunches 17.00-Late BBQ</p> <p>Friday 7th</p> <p>Entertainment 08.00-11.00 DJ Breakfast 18.00-19.00 Mount Gay Drinks Promotion 18.00-22.00 DJ 22.00-00.00 Band - SOUL REVIVAL 00.00-Late: DJ</p> <p>Catering 8.00-11.00 Breakfast Rolls Club Bar Java Coffee & Tea 17.00-Late: BBQ 18.30-22.30 Gala Dinner (booking essential)</p>	<p>Saturday 8th</p> <p>Entertainment 08.00-11.00 DJ Breakfast 14.00 Kids Entertainment 16.00-19.00 Band - HONEYDEW 18.00-19.00 Gin Drinks Promotion 19.00-21.00 DJ 21.30-23.30 Band - MEN IN BLACK 23.30-Late DJ</p> <p>Catering 08.00-11.00 Breakfast Rolls Club Bar Java Coffee & Tea 12.30 'Ino Wine & Bellinter House' Ladies Lunch & Fashion Show by Soul Boutique BBQ 16.00-Late Spanish Tapa's (Dining Room) 18.30-22.30 Fish & Chips (forecourt)</p> <p>Sunday 9th</p> <p>Entertainment 08.00-11.00 DJ Breakfast 13.30-14.30 Jazz music 16.00 Closing Ceremony & Prizegiving RStGYC (forecourt) & DJ</p> <p>Catering 08.00-11.00 DJ Breakfast 12.30-18.30 BBQ 12.30-14.30 Sunday Lunch (dining room)</p>
---	--

Travel & accommodation

Ferry

For those travelling from England, both Stena Line and Irish Ferries operate a service from Holyhead to Dublin. Discount codes will be forthcoming, but as an example, the daytime fare for camper van and trailer in June 2018 was £370 return. Crossing time is approximately 3½ hours with up to 10 crossings daily. Dun Laoghaire is approximately a half-hour drive from the ferry port.

www.irishferries.com

www.stenaline.co.uk

Hotels

Volvo Dun Laoghaire Regatta have reserved rooms in the following hotels which are a mere two minutes walk to the yacht clubs. Contact the regatta secretary [Ciara Dowling](mailto:Ciara.Dowling@volvo.com) for reservation details.

Royal Marine Hotel 4* Plus

Two minutes walk to clubs
Room rates including breakfast
€145 per single room
€160 per twin/double room
€190 per triple room
€260 per quad room
Popular with the RNIYC fleet!
www.royalmarine.ie

STENA LINE TIMETABLE

Holyhead to Dublin		Dublin to Holyhead	
Depart	Arrive	Depart	Arrive
02.30	05.45	02.15	05.45
08.55	12.10	08.10	11.50
14.00	17.15	14.50	18.20
20.30	23.45	20.40	00.01

IRISH FERRIES TIMETABLE

Holyhead to Dublin		Dublin to Holyhead	
Depart	Arrive	Depart	Arrive
02.40	05.55	02.00	05.15
08.30	11.45	08.05	11.30
11.30	13.30	08.30	10.30
14.10	17.25	14.15	16.15
17.15	19.15	14.30	17.45
20.15	23.30	20.55	00.20



Haddington house 3*

Two minutes walk to clubs
Room rates including breakfast
€105 per single room
€145 per double/twin
€170 per triple room

www.haddingtonhouse.ie

B&B/Guesthouse

There are numerous B&Bs/guesthouses available with single double and twin rooms, some with ensuite facilities. A selection can be [viewed here](#).

Airbnb

A selection of rooms and entire apartments [available here](#).

Motorhomes and camper vans

Dun Laoghaire is effectively a city venue, and the facilities are not the same as a rural sailing event. The harbour area is a public car parking area with pay and display parking. Motorhomes are permitted to park in the west end of the harbour area only which is a mere 5-10 minutes walk from all yacht clubs. Parking is €4 per day and there is access to water and public toilet facilities. There are no power or refuse facilities in this area.

Things to do – Dún Laoghaire



The James Joyce Tower and Museum

Dublin's Martello towers were originally built to protect against invasion by Napoleon, but many have gone on to serve other purposes, such as this one in Sandycove. Having once housed one of Ireland's best-known writers, James Joyce, for all of six nights, it was featured in his famous novel Ulysses. It has since been dedicated to his memory with a museum celebrating his life and works. The display includes letters and photographs belonging to Joyce, and the living room has been dutifully kept to fit the book's description.



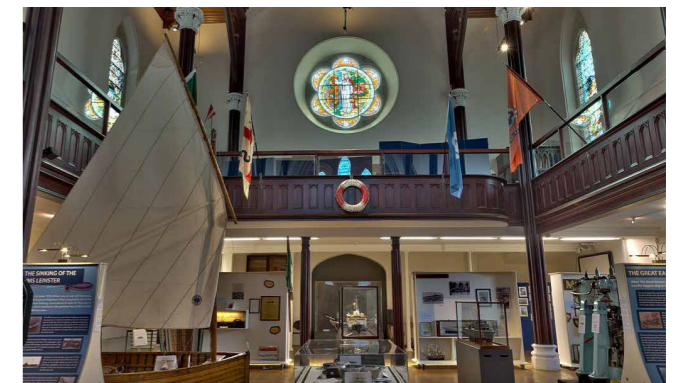
The People's Park

A quaint landscaped park near the seafront, The People's Park is a great place to bring a picnic or just to unwind. It's open daily, as is the Fallon & Byrne restaurant that has taken up residence in the Victorian park shelter that was formerly the park tea rooms. A sister of the upmarket restaurant and food hall that has become a city-centre staple, its veranda overlooks the park and is the ideal setting for a special occasion. On Sundays the park is taken over by a colourful farmer's market, with fresh produce available from Ireland and abroad.



The East Pier

Dún Laoghaire Harbour's East Pier is over a kilometre long and the perfect setting for a stroll, favoured by tourists and day trippers as well as Dún Laoghaire locals and office workers out for some lunchtime exercise. Jutting purposefully out into Dublin Bay, it affords stunning views across the water to the Howth Head peninsula, its northern counterpart. It also boasts a beautifully restored bandstand and culminates in the East Pier lighthouse, long automated but retaining its historic charm. Beneath the lighthouse, walkers can reward themselves with a treat from Teddy's, one of Dublin's favourite ice cream parlours.



The National Maritime Museum of Ireland

Ireland's National Maritime Museum occupies a former mariners' church, one of the few left standing in the world. Purpose-built to give sailors a place to pray, it has been lovingly maintained – the only thing identifying it as retired from the outside is a huge anchor in the yard. It houses several exhibits including a recreated ship's radio room, a Titanic exhibition and items from the wreck of the RMS Leinster, torpedoed in 1918 off the Dún Laoghaire coast. The Maritime Café inside is also one of the town's best lunch spots, stocking healthy and delicious vegan and vegetarian fare.

EARLY BOOKING FOR ACCOMMODATION IS STRONGLY ADVISED

Things to do – Dublin



Dublin's DART (Dublin Area Rapid Transit) covers 53km of city and coast, offering a tourism express train right on your doorstep. This scenic and speedy train line serves a whole host of stops along Dublin's picturesque coast, and you can pick up one-day, three-day or week-long tickets. The gorgeous coastal villages – Howth, Dalkey, Dún Laoghaire, Malahide and Skerries – are must-sees but there are plenty more hidden gems just waiting to be explored along this beautiful stretch. Dublin is just 20 minutes on the DART from Dun Laoghaire station, right beside the harbour.



Travel out to Malahide

Malahide Castle is one of the most important historic buildings in Dublin and well worth a visit to learn about the city's rich past. Malahide Castle dates back to the 12th century and was inhabited by one of the most influential families in the country, the Talbots. Having survived the Battle of Boyne and seen through the Penal Laws, the castle is a significant building in terms of Irish history – not to mention a stunning museum of period furniture from the Neo-Classical and Rococo eras, as well as paintings and portraits from the National Gallery of Ireland.



Walk around the courtyards of Trinity College

You'll find one of the most esteemed universities in the world in Dublin city centre, Trinity College. Its students have included playwrights and writers, like Oscar Wilde, Bram Stoker and Samuel Beckett, amongst others. The historic collegiate dates back to 1592 and was modelled on the traditional English colleges of Oxford and Cambridge. As it is Ireland's oldest university, it's also one of the seven ancient universities in Britain.



Pour a pint of Guinness

Guinness Storehouse was voted the most popular tourist attraction in Europe for 2015, so it's no wonder that it's high on everyone's to-do-list in Dublin. A visit to this multi-sensory attraction will have you learning everything about the nation's favourite stout. From how it's brewed, to how it's drunk, to how it's advertised. Join a free tour of the seven storey experience and don't miss an opportunity to pour the perfect pint – and not pay a cent to enjoy drinking it afterwards! Did you know it should take 199.5 seconds at a 45 degree angle?



Visit Temple Bar

Temple Bar is the place to go for a taste of typical Irish 'culture' – you'll find traditional bars, folk music playing in the streets and pubs, bold graffiti and walking tours. You can't help but be seduced by the vibrancy of this popular area on the south bank – it's a definite must on your places to go. Don't forget your camera to capture the brightly coloured buildings, and stop off along the way for a traditional Irish tippie and hearty pub meal.



Tour of Old Jameson Whiskey

If you like whiskey then a tour of Jameson Distillery, Bow St is a must! Stroll through the old distillery and learn about the history of Irish whiskey, from the old copper stills to the distilling process itself. Whiskey-making was once one of Dublin's main industries, and employed people with a range of skills from coppersmiths, to engineers, saw millers and iron mongers. After the tour (and you're now a whiskey-making expert!) you'll be given a free dram at the bar. You can even take it a step further and become a Qualified Irish Whiskey Taster. Don't mind if we do...



Experience the history at Dublinia

Step back in time and learn about Dublin through the ages at Dublinia, from the initial Viking settlements to the medieval period, and delve into the historic, cultural and social events which shaped the Dublin we know today. This fascinating museum is one of the most popular in the city and will give you a fresh outlook on the city's history. Immerse yourself in a day-in-the-life of a Viking, or even a slave during the Middle Ages. And learn about how this industrial town grew into the metropolitan city it is today.

Things to do – Dublin



Visit Dublin Castle

Dating back to 1204, Dublin Castle is one of the most historic sites in Dublin. Spanning an impressive 11 acres, you are welcome to walk around the ruins, or step into the museums, State Apartments, Medieval Undercroft, Chapel Royal and Chester Beatty Library. Explore the history of the true centre and power house of Dublin, and even join a guided tour to find out its secrets and scandals...



Brazen Head

If you haven't had enough of the Irish drinking culture in Dublin, make a beeline for the Brazen Head, Dublin's oldest pub, full of character and whose walls could certainly tell some tales. Prop yourself up at the bar of this 12th century pub, whose customers included James Joyce, Daniel O'Connell and Michael Collins, and enjoy fresh ales on tap and fine Irish dining (traditional and contemporary dishes). You really can't pass this one up!



National Botanic Gardens

The National Botanic Garden in Glasnevin is one of Dublin's most visited tourist attractions, with its exquisitely restored Victorian conservatories, its intricately planted herbaceous borders and its large number of different plant species, it is the perfect day out. Visitors can have a relaxing day walking around the beautiful rose garden, the alpine yard, the pond area, the rock garden and arboretum plus experience Palm House and the Curvilinear Range's stunning exterior and interior.



Dublin Writers Museum

Ireland is home to a number of Nobel Prize winners and acclaimed authors and so has a longstanding literary tradition and heritage to be explored. The Dublin Writers Museum celebrates the country's literary heroes and through its exhibitions, outlines the milestones of key writers over the past three hundred years, including Wilde, Yeats, Joyce and Beckett.



Visit the Little Museum of Dublin

Nicknamed the 'people's museum' of Dublin, this unique and charming museum is full of amazing treasures donated over the years by ordinary Dubliners to make up an eclectic exhibition of a bit of everything! The Little Museum of Dublin charts the cultural and social history of the city in the 20th Century, from James Joyce to U2. Discover the city through the eyes of its locals!



Walk over the River Liffey

The River Liffey is Dublin's main artery, running through the city for 7.5 miles into the Irish Sea at Dublin Bay. The two banks make for picturesque walks through the town centre, shouldered by stunning Georgian architecture. For great views down the river, head to the famous Ha'penny Bridge, built in the early 19th century. Don't forget to take a look at night too, when the bridge is lit up. People used to fix love locks to the bridge as symbols of their commitment. But if you're feeling romantic, be warned – from 2013 the council has discouraged this tradition!



EPIC The Irish Emigration Museum

Uncover hundreds of stories of adventure, adversity and triumph in the world's only fully digital museum at EPIC The Irish Emigration Museum. EPIC is a modern museum situated in Dublin's Docklands, it tells the moving and unforgettable story of the 10 million Irish people who left their homeland – and how they influenced and shaped the world.



Irish Museum of Modern Art

IMMA is Ireland's leading national institution for the collection and presentation of modern and contemporary art. Visitors can enjoy a wide range of exhibitions featuring the work of leading Irish and International artists and well as attend free public tours and stroll through stunning 17th century formal gardens.



VOLVO DÚN LAOGHAIRE REGATTA

IN PARTNERSHIP WITH SPIRIT MOTOR GROUP

